

优
術

明
道

取
勢

Impact Leadership in the Era of Global Disruptions

**CKGSB &
Møller Institute**
Churchill College in the
University of Cambridge



CKGSB
长|江|商|学|院



Program Overview

In the past 30 years, China and the US may have been the best examples in fostering extensive disruptions as illustrated by the rise of new world-class companies and a new wave of wealthy individuals and families, but these two economies have also been confronted with income and wealth inequality and diminishing social mobility. Many other economies may need more disruptions like those witnessed in the US and China. Fostering future disruptions is essential for sustained economic prosperity and enhanced social harmony. This joint program by CKGSB and Churchill College at the University of Cambridge aims to promote a new generation of disruptions that can contribute to economic, social, environmental and global good.

"It was the best of times, it was the worst of times – Charles Dickens".

We are in an era of major transformations as evidenced by technological, social, political and geopolitical disruptions, as well as the evolution of development models, reconfiguration of the global trading and investment system, ongoing trade frictions and a bifurcated global economy arising from the potential decoupling of the US and China.

To sustain these changes and stay ahead of the curve, we believe that future business leaders will need to develop a vision and skillset that enables them to:

- Integrate global resources and build a shared sense of global responsibility
- Embrace, drive and lead significant technological and business model innovations and disruptions
- Support social innovation and play a positive role in addressing major societal issues, such as income and wealth inequality, the decline in social mobility, and the need for sustainable development.

Impact Leadership in the Era of Global Disruptions aims to build a global ecosystem that can develop future leaders to embrace and drive innovations for economic, social and global good in the long run. Co-designed and co-delivered by two leading institutions—Cheung Kong Graduate School of Business (CKGSB) and the Møller Institute of Churchill College in the University of Cambridge—this program is the product of a unique partnership that bridges the East and the West. The insights, foresights and wisdom that participants will gain from the program will help them to better understand today's disruptions and even stay ahead of the curve, so as to better navigate their companies in this turbulent world undergoing a multitude of transformative changes.

Program Highlights

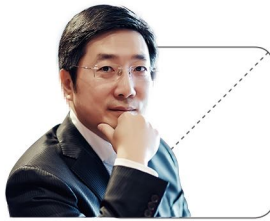
- A holistic perspective on leadership to address today's global disruptions, covering not only traditional disciplines in leadership like management and economics, but also geo-politics, technology, innovation and humanities
- A global outlook of business and its impact on society with insights from both the East and the West
- A long-term view and emphasis on sharing of experiences and frameworks from the US and China in generating disruptions over the past 30 years
- Dialogue with Nobel Prize winners to understand cutting edge science and technology development, and visit some of the world's top unicorn companies

Organizers & Partners



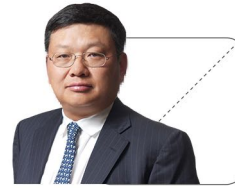
CKGSB's World-class Faculty

Faculty Director



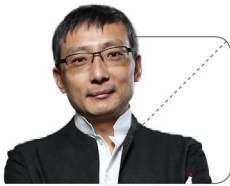
TENG Bingsheng

Professor of Strategic Management
Associate Dean for CKGSB Europe and Asia
PhD, City University of New York
Previously taught: George Washington University



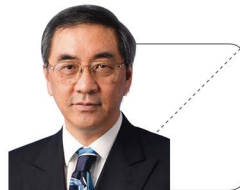
XIANG Bing

Founding Dean
Professor of China Business and Globalization
PhD, University of Alberta
Previously taught: HKUST, Peking University



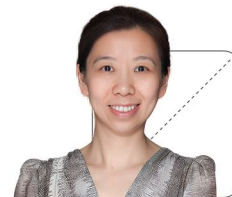
LI Wei

Professor of Economics Director
for CKGSB Case Center
PhD, University of Michigan
Previously taught: Duke Fuqua,
University of Virginia Darden



Leslie YOUNG

Professor of Economics
PhD, University of Oxford
Previously taught:
University of Texas at Austin



ZHU Rui (Juliet)

Professor of Marketing
Associate Dean for EMBA Programs
PhD, University of Minnesota Minneapolis
Previously taught: University of British Columbia

The Møller Institute's Teaching Team

Faculty Director



Richard HILL

Associate of Møller Institute, Churchill College in the University of Cambridge;
Leadership activist and social innovator,
Founder Realize;
Formerly Executive Director Centre for Compliance & Trust,
Cambridge Judge Business School



Lord WILSON of Dinton GCB, MA, LL.M

Member of House of Lords
Economic Secretariat under Mrs Thatcher's Office
Former Master of Emmanuel College,
University of Cambridge



Professor MEI Jianjun

Director of the Needham Research Institute
Fellow of Churchill College, University of Cambridge
Director of the Institute of Historical Metallurgy and Materials,
University of Science and Technology Beijing



Howard COVINGTON

The Inaugural Chair of The Alan
Turing Institute,
Chair of the Isaac Newton Institute for
Mathematical Sciences



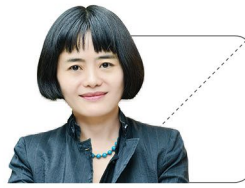
Gillian SECRETT

CEO and Fellow,
Møller Institute, Churchill College in the
University of Cambridge



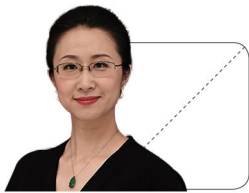
Ji Bo

Program Director
Chief Representative for Europe
Assistant Dean of Global Executive Education



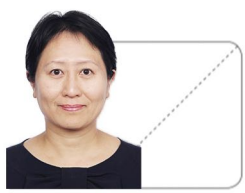
Gan Jie

Professor of Finance
Associate Dean for Alumni Affairs
PhD, Massachusetts Institute of Technology
Previously taught: HKUST



ZHANG Xiaomeng

Associate Professor of Organizational Behavior
Associate Dean for Executive Education
PhD, University of Maryland
Previously taught: American University



Christina FANG

Professor of Management
PhD, University of Pennsylvania Wharton
Previously taught: New York University



Sudhanshu PALSULE

Associate of Møller Institute, Churchill College in the University of Cambridge
Leading thinkers in the fields of Complexity and Transformative Leadership



Professor Tim MINSHALL

Head of the Institute for Manufacturing;
Fellow of Churchill College,
University of Cambridge



Professor Peter NOLAN

Director of Centre of Development Studies,
University of Cambridge
Chong Hua Professor in Chinese Development
Director of the Chinese Executive Leadership Programme (CELP)



Ruth BERRY

Associate of Møller Institute,
Churchill College in the
University of Cambridge

Message from the Deans

"To be globally competitive, we believe that future leaders must compete with empathy and compassion. Our pioneering experiment, combining instruction in both management and the humanities, sets us apart as a new-generation business school with global ambition."



XIANG Bing

CKGSB Founding Dean
Professor of China Business and Globalization

"We believe in high-impact learning that encourages behavioural change in leaders to accelerate the performance of individuals and their organisations. We put our delegates at the heart of everything we do to inspire individuals to be the best they can be, and create a positive impact on society and the environment."



Gillian SECRETT

CEO and Fellow
Møller Institute, Churchill College in the University of Cambridge

Cheung Kong Graduate School of Business

Cheung Kong Graduate School of Business (CKGSB) is China's first independent, faculty-governed and non-profit business school. Founded in 2002 with support from the Li Ka Shing Foundation, CKGSB's mission is to cultivate business leaders with a global vision, a humanistic spirit, a strong sense of social responsibility and an innovative mind-set.

CKGSB is headquartered in Beijing, teaching sites in Shanghai and Shenzhen, with overseas offices in New York, London, and Hong Kong. The school offers innovative MBA, Finance MBA, METI, Executive MBA, Business Scholars Program (DBA), Executive Education programs and Chuang Community. CKGSB boasts over 13,000 alumni, more than 50% of whom hold CEO or Chairman level positions at leading companies, and one-fifth of China's most valued brands are led by CKGSB alumni, including graduates such as Alibaba Founder Jack Ma and Co-founder of Tencent, Chen Yidan. This close connection to the school and its alumni provides global entrepreneurs a unique opportunity to engage with the most influential leaders across all business sectors in a dynamic community, which can benefit all participants - past, present and future.

Global Platform:

CKGSB is recognized as one of the most globalized business schools in China for its success in facilitating top-level exchange between businesses, academics, nonprofit and government sectors around the world. CKGSB works with close to 40 leading universities to serve business leaders with the best management education available.

The Møller Institute

The Møller Institute is an agile executive education and research business which enables organisations to transform themselves and be the best they can be. We are wholly owned by Churchill College, and support businesses with transformational challenges primarily around the key areas of strategy, leadership, innovation and growth. Over the past twelve years, more than 4,000 senior and aspiring leaders from global organisations have attended leadership development programmes designed and delivered by our team. We covenant all our profits back to Churchill College.

Churchill College

An extraordinary record of academic excellence with 32 Nobel Prize winners amongst its Fellowship, past and present. Sir Winston Churchill wanted to create a British equivalent of the American MIT (Massachusetts Institute of Technology) and this was achieved with Churchill College, constitutionally obliged to take in a minimum of 70% of students (under and postgraduate) in STEM subjects. By supporting leadership development in companies, we help grow young leaders for the future.

Module 1 - CHINA: Beijing & Shenzhen

(CKGSB Campus)

Arrival - Beijing - Welcome Dinner		
Keynote: Cross-cultural Leadership Under Chinese Context (Assistant Dean Bo Ji)		
DAY1	Morning	Lecture 1: Globalization and China's model of economic development: an historical and global perspective (Prof. XIANG Bing, Founding Dean)
	Afternoon	Company visit 1: JD.com - China's largest online retailer the country's biggest Internet company by revenue
	Evening	Group Dinner
DAY2	Morning	Lecture 2: Winning Strategies and Reshaping Innovation in China (Prof. TENG Bingsheng)
	Afternoon	Company Visit 2: VIPKid – China's Largest EdTech company
	Evening	Group Dinner
DAY3	Morning	Lecture 3: How to balance between social and commercial entrepreneurship through designing an innovative social enterprise (Prof. ZHU Rui/Juliet)
	Afternoon	Event: Panel Discussion with Chinese Impact Entrepreneurs
	Evening	Flight from Beijing to Shenzhen
DAY4	Morning	Company visit 3: Huawei Technologies
	Afternoon	Lecture 4: The future of intelligent industry - driven by technology innovation (Prof. GAN Jie)
		Event: Network with Chinese Disruptive Entrepreneurs
DAY5	Morning	Company Visit 4: 3NOD
	Afternoon	Lecture 5: Creative Leadership: How to lead effectively in a disruptive but converging world (Prof. ZHANG Xiaomeng/ Christina FANG)
		Certificate granting ceremony End program reception
Departure		

Module 2 - UK: Cambridge

(Møller Institute, Churchill College in the University of Cambridge)

Arrival - Cambridge Welcome Dinner		
Private tour of historic Cambridge Colleges and chauffeured punting		
DAY1	Morning	Lecture 1: Leadership in Complex Times
	Afternoon	Lecture 2: Getting to grips with global disruptions
DAY2	Morning	Lecture 3: Our technological future
	Afternoon	Visiting Artificial Intelligence Group at Department of Computer Science and Technology at Cambridge
DAY3	Morning	Lecture 4: Values, purposes and common good in an age of difference
	Afternoon	Dialogue with Nobel Prize winners on science & technology, international trade, global citizenship and social responsibility
Departure		

* All content is subject to change and is based on the availability of each contributor

Program Benefits

This program consists of 2 modules, held at the Møller Institute of Churchill College in the University of Cambridge and CKGSB campuses in Beijing and Shenzhen. Impact Leadership in the Era of Global Disruption brings together renowned faculty from the University of Cambridge and CKGSB with an international group of leaders to help create social and economic value through collaboration among entrepreneurs, corporations, investors and other stakeholders in the social innovation ecosystem.

During the program, participants will build their understanding and mastery of approaches to developing and applying innovative solutions to complex issues, and will explore and expand their ways of working within a global context and improving society.

IN THIS PROGRAM, PARTICIPANTS WILL:

- Develop deep insights into the challenges and opportunities facing their organizations
- Grow their personal leadership capabilities to succeed in a disrupted world
- Build networks, connections and friendships with others from around the globe, including successful entrepreneurs, social innovators, academic experts and other leading figures
- Create awareness across cultures to equip them to thrive in an interconnected world
- Generate strategies for the future that can satisfy business objectives and the common good



Participant Profile

Impact Leadership in the Era of Global Disruptions aims to foster a new generation of disruptive business leaders.

The program is open to visionary global business leaders who have a desire to generate profit while doing good. Candidates should hold a leadership role (C-level, Founder, board member, or other senior management roles) at a sizeable global institution.

We welcome participants from both for-profit and non-profit organizations. Program participants will come from a wide range of backgrounds, from both the East and the West.

Dates and fees

Module 1 - Beijing & Shenzhen, China: 24-29 May, 2020

Module 2 - Cambridge, UK: 26-29 October, 2020

China module - GBP 6,800 per participant; UK module - GBP 4,500 per participant;

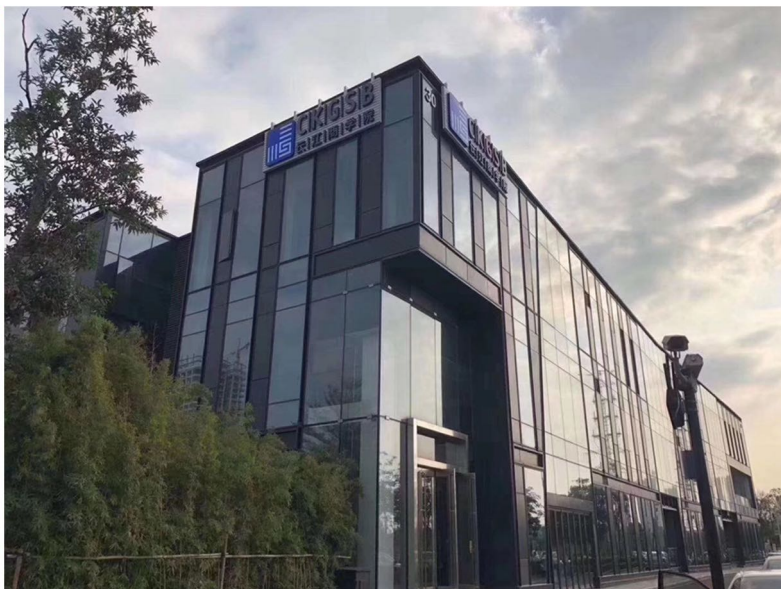
Two modules - GBP 9,800 per participant

Early bird and group rates are available. The cost of intercity flight within China and accommodations in China and UK are included from the tuition fee. We will recommend hotels to participants with a special corporate rate.

Apply

Website: www.ckgsb.eu

Contact: +44 0756 8940 184 (e-mail: boji@ckgsb.edu.cn)



FIND OUT MORE!



www.ckgsb.eu



www.mollerinstitute.com

London

CKGSB Europe,
11-12 St James's Square,
London, SW1 Y4LB, UK

Cambridge

The Møller Centre,
Churchill College, Storey's Way,
Cambridge, CB3 0DE, UK

New York

230 Park Ave, Suite 540,
New York, NY 10169, USA

Beijing

3/F, Tower E3, Oriental Plaza,
1 East Chang'an Avenue,
Beijing 100738, China

Shanghai

1&2/F, Building 5,
Hongqiao Vanke Center, 988 Shenchang
Road, Minhang, Shanghai, China

Shenzhen

1, 2&3/F, Building 30, Qianhai Enterprise Mansion,
63, 1st Qianhai Road, Nanshan,
Shenzhen, China