



A Euromoney
Institutional
Investor Company

CEIC DATA MANAGER (CDM) USER GUIDE

CDM CDM Provides you with the power to access, analyze, present and share insights from the most complete, accurate and timely set of economic data from CEIC.

www.ceicdata.com



Table of Contents

1	INTRODUCTION	2
2	STARTING CDM	2
3	CDM TABS	3
3.1	INSIDE CDM	3
3.2	START	3
3.3	MY SERIES	4
3.4	MY LIBRARY	4
3.5	SEARCH.....	5
3.6	RELEASE SCHEDULE	6
3.7	FOOTNOTES.....	6
4	CDM TOOLBARS	7
4.1	DOWNLOAD TO EXCEL	7
4.2	EXPORT	9
4.3	CHART.....	10
4.4	TABLE	12
4.5	ADD TO MY SERIES.....	13
4.6	ADD TO WATCHLIST.....	14
4.7	RESEARCH LINKS.....	15
4.8	FEEDBACK	16
5	CDM LINK FOR MS POWERPOINT AND WORD	16
6	FUNCTIONS	18
7	SETTINGS FOR LANGUAGE.....	19
8	ENHANCEMENTS ON THE LATEST VERSION OF CDM.....	20
8.1	PASSWORD MANAGEMENT	20
8.2	SUPPORT.....	21
8.3	NEW NOTIFICATIONS WINDOW.....	21
8.4	CDM CHARTING ENHANCEMENTS.....	22
9	USER GUIDE	24
10	ABOUT CEIC AND OUR DATABASES.....	24

I Introduction

CEIC Data Manager (CDM) provides you with the power to access, analyze, present and share insights from the most complete, accurate and timely set of economic data from CEIC. From within a standalone application, in few clicks you can view data, download, chart, or send information. Spot trends using charting, analyze relationships using math functions, and receive alerts of new releases and data revisions, to stay on top.

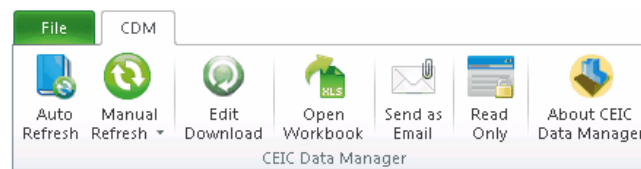
2 Starting CDM

- CDM can be accessed from your Desktop or from your Programs directory.
- In MS Excel, Word and PowerPoint you will see a “CDM” tab (if you have installed the CDM add-ins).

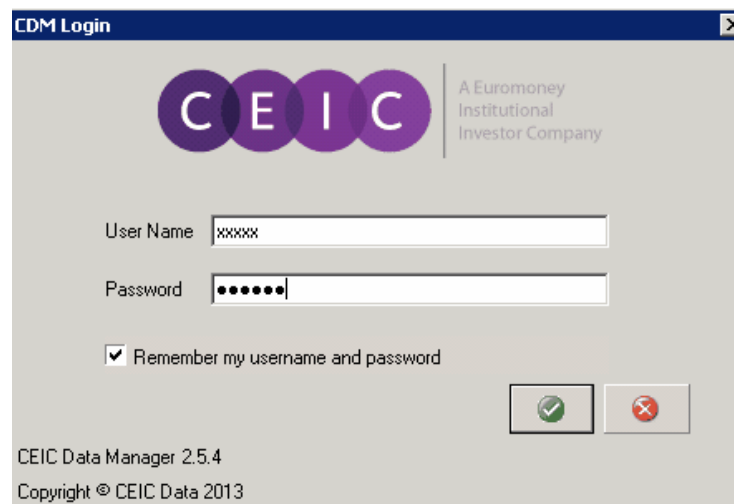
Desktop



Microsoft Office Toolbars:



- Open CDM and enter your Username and Password.
- Check "Remember my username and password" will allow CDM to save your log in information for next log in.

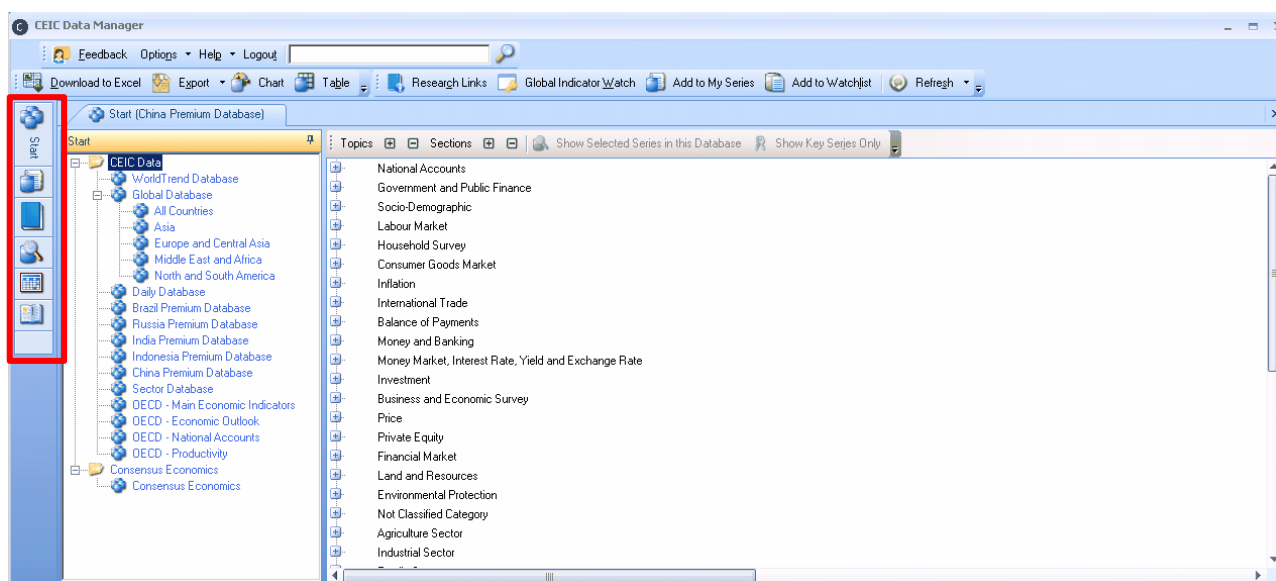


- If there is a problem with the log in, CDM will prompt you with an error message. You can return to the log in pop-up again to correct the information and connect again.

3 CDM Tabs

3.1 Inside CDM

After logging in successfully, you will see the window shown below.



The Left-hand Navigation Bar shows 6 different Tabs, which enables you to switch between CDM features that include: Start; My Series; My Library; Search; Release Schedule and Footnotes.

3.2 Start

- Navigate the CEIC databases and series through this Start Tab. Simply click on a database to display the series tree in the right pane. The series are listed in a tree layout consisting of 4 levels on the right:

Level 1 – Topics

Level 2 - Sections

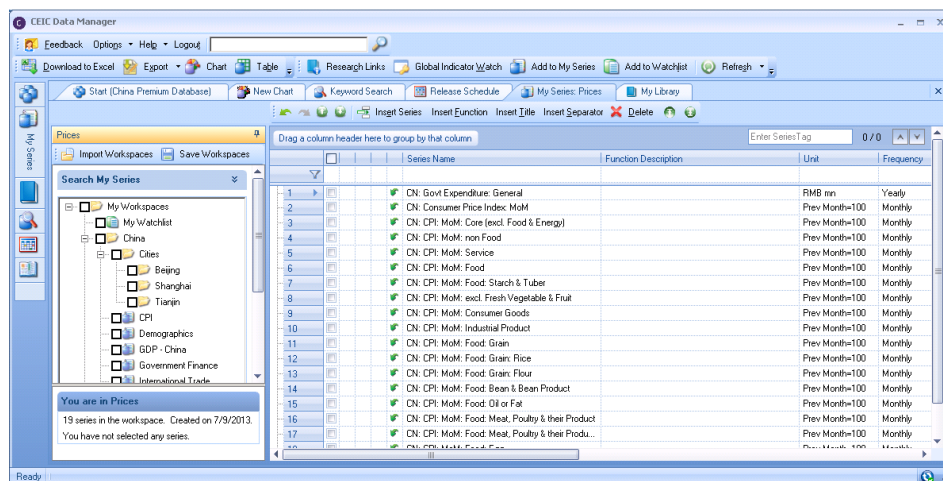
Level 3 - Tables

Level 4 - Series

- Expand or collapse Topics, Sections or Table levels, by clicking the (+) or (-) box.
- Click on the series to select and view a Quick View pane.
- Click the “Refresh” button on the Toolbar to keep the series observations up-to-date.
- The Series Selection Toolbar provides options to view your series list such as: only showing the series you have selected and only showing Key Series in the Global Database, which are selected by our CEIC analysts, to provide an overview of economic performance.

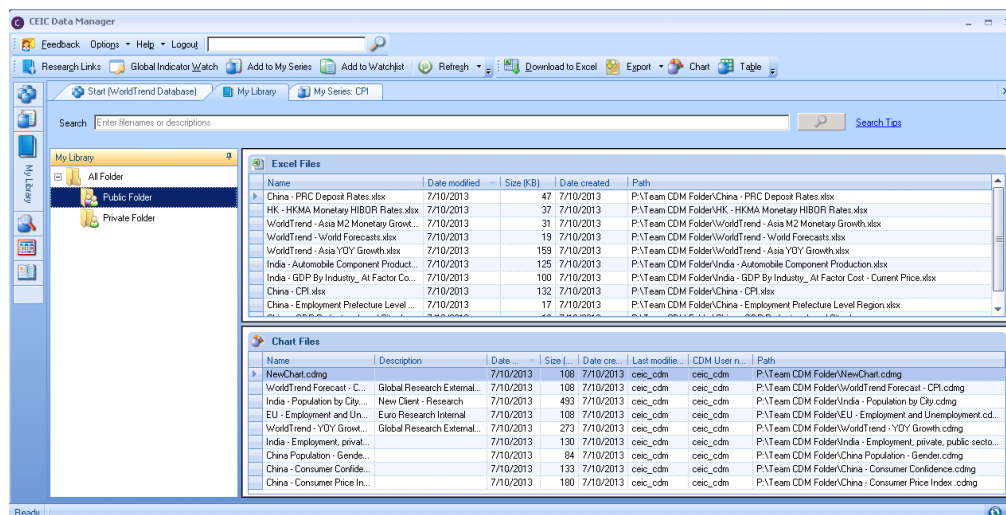
3.3 My Series

- My Series is where you can manage your customized Workspaces and Watchlist.
- Workspaces allow you to save series that you frequently use. The maximum number of workspaces is 250, with a maximum of 1,000 series in each workspace.
- Watchlist allows you to monitor up to 1,000 series for updates and alerts.
- Select series from the Start or Search Tabs and use the CDM Toolbar buttons to add series to your Workspaces or Watchlist if you need to monitor and use them regularly.



3.4 My Library

- My Library is a central repository for Excel files and CDM Charts, where they can be organized, opened, saved, renamed and searched in one place.
- By default there is a Public Folder for sharing Excel Files and CDM Charts amongst CDM users within the same company, while the Private Folder is designated for personal files. Mapping of these directories is compulsory during initial CDM setup where the Settings Wizard will prompt you to assign default folders.
- The right pane displays the Excel and Chart Files respective of the folder you have selected in the left pane. Simply double click on the files that you wish to open MS Excel, or CDM Charting Interface.



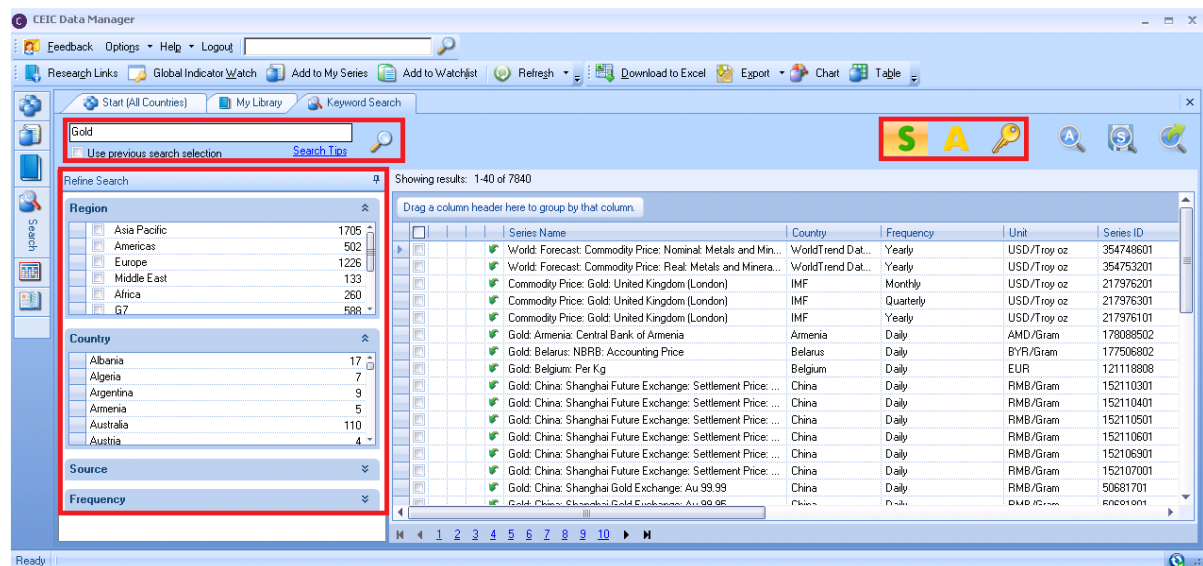
3.5 Search

- Search provides a simple layout with a faceted search algorithm. It allows you to refine and filter your results by selecting one or multiple criteria randomly in each category. There are 3 ways to search for series in CDM:

1. Keyword Search

Use the Search Buttons to search for Subscribed, Active, and/or Key Series before entering your keyword or series code, click on the Search or press enter. (Search Tips helps you get familiar with the search syntax.)

Results will be shown in the right pane. You can then use the 6 search filters on the left pane to further refine your results. Once selected, results will dynamically refresh so that you can quickly find what you are looking for.



2. Quick Search

Quick search is always located at the top of your CDM screen. Simply enter a keyword or series code in the box, click on the Search Button (magnifying glass) or press enter. You will be directed to the Keyword Search Window to refine your search if required.



3. Advanced Search

Click on the Advanced Search Button, shown next to the Key Series button, to select parameters to refine your search. After you have chosen additional parameters, click the Search button. Results will be returned back in the Keyword Search Window to refine your search if required.

3.6 Release Schedule

- Release Schedule informs you of when indicators are released or will be released.
- See a list of the Latest Releases (published in the past 24 hours) from any country as well as Coming Releases (scheduled for release in the next 7 days) on the right pane.
- On the left-hand side of the screen you can perform a Search based on select criteria.

Search Criteria

Indicator Source Series Code

Clear Selection

Define Date Range: 7/11/2013 to 7/11/2013

Status: Pending, Delayed, Released

Reset Selection

Saved Searches

Description: Save

Template(s): Load Delete

Latest Releases

Date	Indicator	Country	Release Type	Frequency	Obs. Date	Obs. Value	Unit	Series ID
7/10/2013	Agricultural Production	Bahrain	Final	Yearly	11/2011	6,547,000	BHD th	135782208
7/10/2013	Average Length of Stay	New Zealand	Final	Monthly	5/2013	2,043.494	Night th	213689802
7/10/2013	Balance of Payments	Montenegro	Final	Quarterly	3/2013	-192,174.384	EUR th	178025802
7/10/2013	Balance Sheet of Central Bank	Portugal	Final	Monthly	6/2013	86,395,000	EUR mn	176154102
7/11/2013	Capacity Utilization	Finland	Final	Monthly	5/2013	82,000	%	352150802
7/10/2013	Central Government Debt	Armenia	Final	Quarterly	6/2013	261,800	AMD bn	317280402
7/10/2013	Consumer Price Index	Mexico	Final	Monthly	6/2013	108,645	16Dec201...	307471601
7/10/2013	Consumer Price Index	Albania	Final	Monthly	6/2013	114,800	Dec2007=...	134464408
7/10/2013	Consumer Price Index	Venezuela	Final	Monthly	6/2013	338,600	Dec2007=...	237225603
7/10/2013	Debt Securities Statistics	EU	Final	Monthly	5/2013	16,789,084	EUR bn	15352301
7/10/2013	Deposits and Loans	Montenegro	Final	Monthly	6/2013	1,994,400...	EUR th	178043502
7/10/2013	Effective Exchange Rate	Armenia	Final	Monthly	5/2013	121,339	1997=100	177972602
7/11/2013	Effective Exchange Rate	India	Final	Monthly	6/2013	89,150	2004-2005...	253498002

Coming Releases (Next 7 Days)

Indicator	Country	Release Type	Frequency	Obs. Date	Release From	Release To	Type
Retail Trade	South Africa	Final	Monthly	5/2013	7/17/2013	7/17/2013	Official
Retail Trade Index	Brazil	Final	Monthly	5/2013	7/11/2013	7/11/2013	Official
Retail Trade Index	Netherlands	Final	Monthly	5/2013	7/15/2013	7/15/2013	Official
Retail Trade Index	Finland	Final	Monthly	5/2013	7/15/2013	7/15/2013	Official
Retail Trade Turnover	Kazakhstan	Final	Monthly	6/2013	7/11/2013	7/17/2013	Official
Retail Trade Turnover	Russia	Final	Monthly	6/2013	7/17/2013	7/21/2013	Official
Retail Trade Turnover Index	Greece	Final	Monthly	6/2013	8/30/2012	8/30/2013	Official
Retail Trade Turnover Index	Croatia	Final	Monthly	5/2013	7/12/2013	7/12/2013	Official
Retail Trade Turnover Index	Cyprus	Final	Monthly	4/2013	7/12/2013	7/12/2013	Official
Retail Trade Turnover Index	Luxembourg	Final	Monthly	4/2013	7/17/2013	7/17/2013	Official
Services Turnover Index	Spain	Final	Monthly	5/2013	7/17/2013	7/17/2013	Official
That Industries Sentiment Index	Thailand	Final	Monthly	6/2013	7/14/2013	7/21/2013	Official

3.7 Footnotes

- Footnotes are detailed information about the series and the databases - background about the series, source, and more.
- They can be accessed using the last tab on the left-hand navigation bar or by right-clicking on the series from the Start Tab, My Series and Search Results and selecting Footnotes.
- Footnotes are displayed in a floating window and an unlimited number can be opened.

Footnotes: WorldTrend Database->Global Economic Monitor->National Accounts->Table: Real GDP: Y-o-Y Growth: Asia

Real GDP: Y-o-Y Growth

Statistical Concept

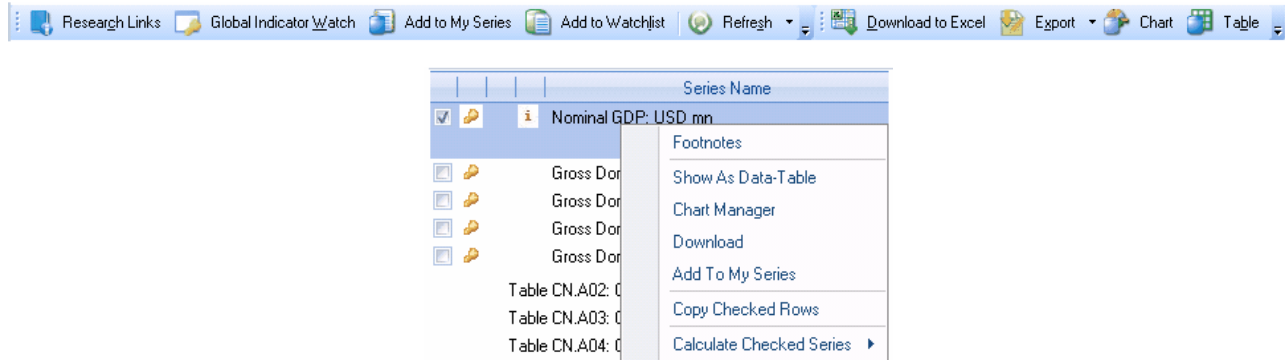
Real GDP growth measures the growth of an economy over time, as computed by its Gross Domestic Product, with the movements of prices in the economy removed.

This indicator is derived from national accounts dataset compiled by each country's own system of national accounts. Majority of the countries compile data according to the **System of National Accounts 1993 (1993 SNA)**.

To keep up with continuous structural changes within their economies, many countries have phased out their traditional fixed-base-year methodology of computing national accounts and price variables, and adopting chain-linked weighting methodology. **Chain-linked** datasets are used to derive national accounts related Global Economic Monitor indicators wherever these are available from national sources.

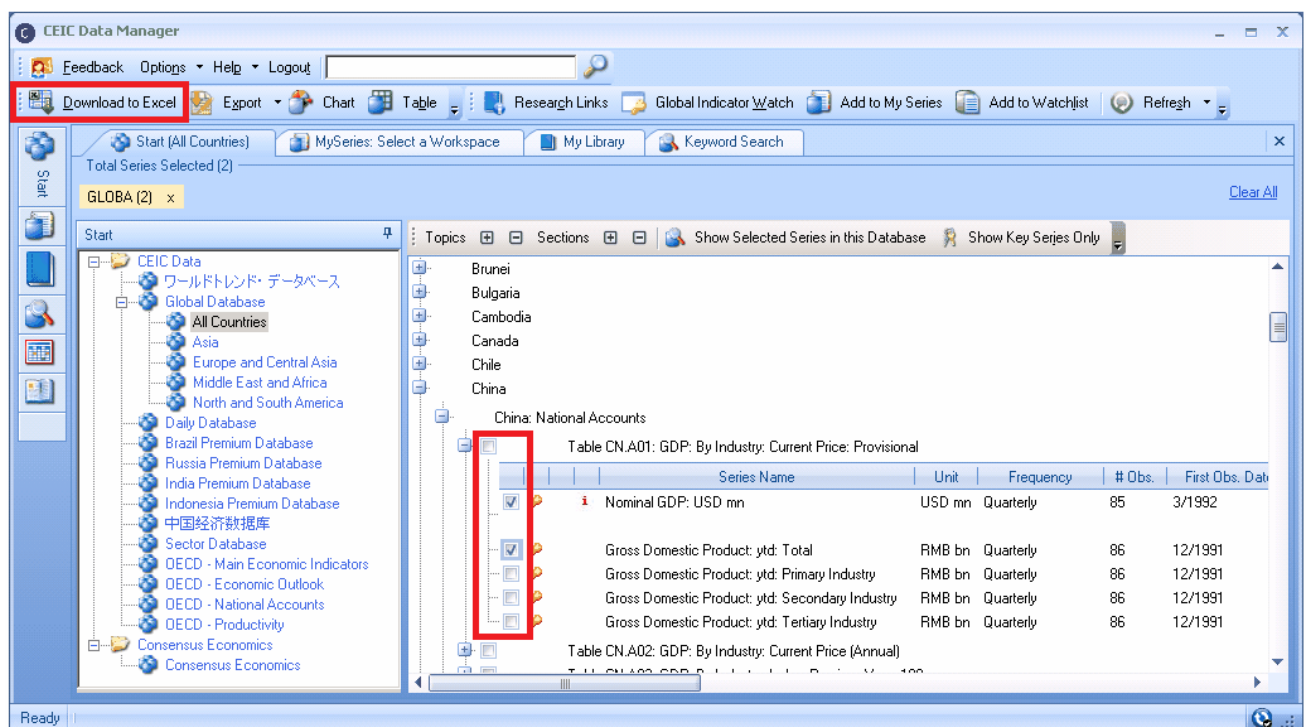
4 CDM Toolbars

You can perform actions to your series by using the CDM toolbars, or alternatively, right-clicking on series to show a list of actions on-the-fly.



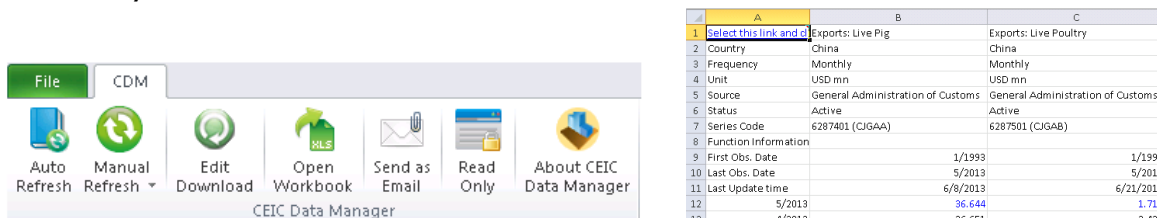
4.1 Download to Excel

- A key feature of CDM is being able to download series data to Excel.
- Select the series you wish to download from CDM's Start Tab, My Series or Search results.
- Click on the button "Download to Excel" or right click and select "Download".
- An "Excel Download" popup will appear. Specify your download options then click on OK (green tick) to download to excel.
- Remember to save the Excel file if you intend to reuse the information again
- Note that you are only allowed to download up to 1,000 series at a time.



Refresh Series

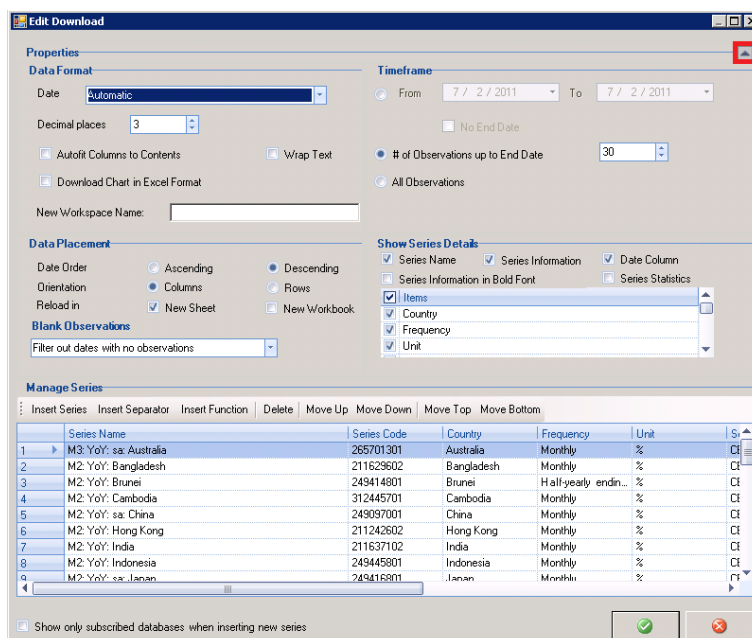
- In Excel, you will see the CDM Toolbar (they will only be enabled if you are logged into CDM)
- If the Auto Refresh Button is toggled on, CDM will automatically refresh your workbook when you open the file. Alternatively, use manual refresh were you update the data yourself.
- Note that you must be on the CDM Link Cell to refresh data.



- When data in Excel has been updated, revised, discontinued, or rebased, you will receive an alert message in Excel informing you of the changes.
- Green Alerts** - Show newly released and revised data points compared with your last refresh.
- Blue Alerts** - Show newly released and revised data points within the last 30 days.
- Text in Italics* - Show Discontinued series.

Edit Download

- Edit Download allows you to change your download settings, insert, delete, and/or reorder series and insert space separators in Excel. You can also maximize and minimize properties section to view the Manage Series section more clearly.

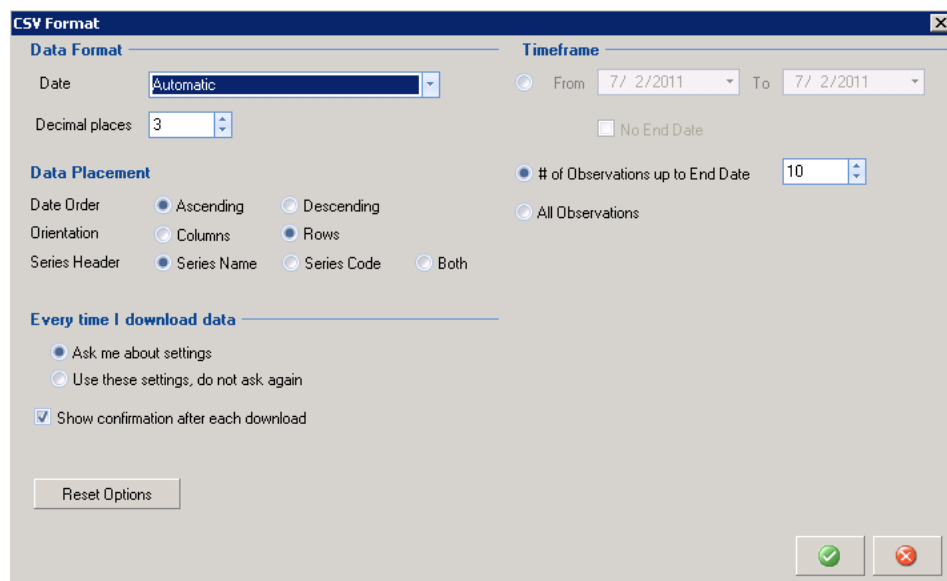


Send as Email and Read Only

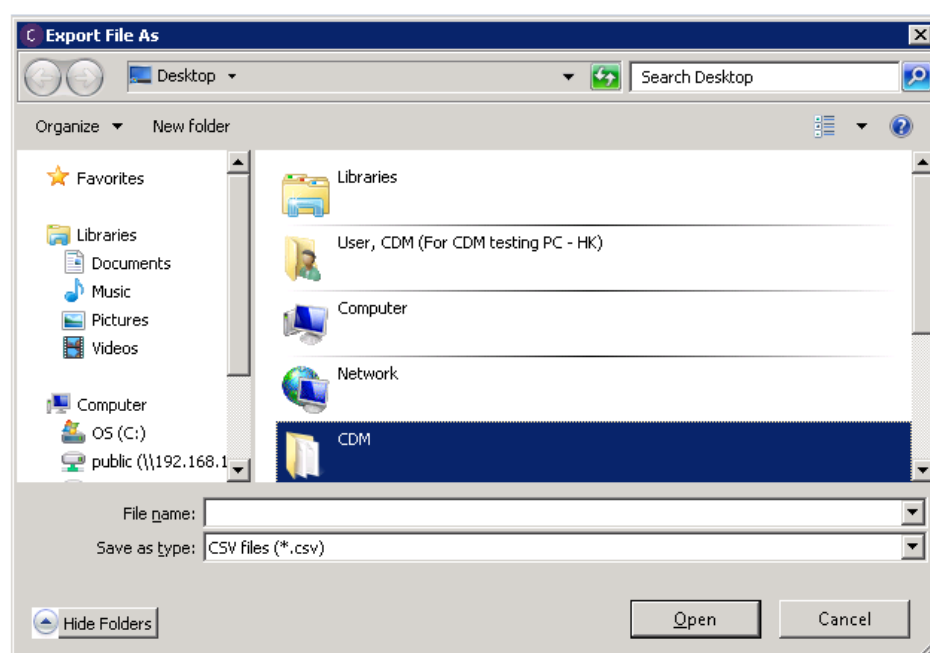
- Share your files instantly by clicking Send as Email Button. Protect your files being modified by other users by toggling the Read Only Button to on.

4.2 Export

- CDM's Export function allows you to save series in CSV format to facilitate their use in your internal systems and third-party software.
- Select the series you wish to export from CDM's Start Tab, My Series or Search results, and click Export. Then choose your export settings.
- To identify the exported series, you can choose to export the Series Name, the Series Code or both pieces of meta-data.



- Click OK (green tick), and then choose a file name and save location in the Export File As dialog box, and click Save.

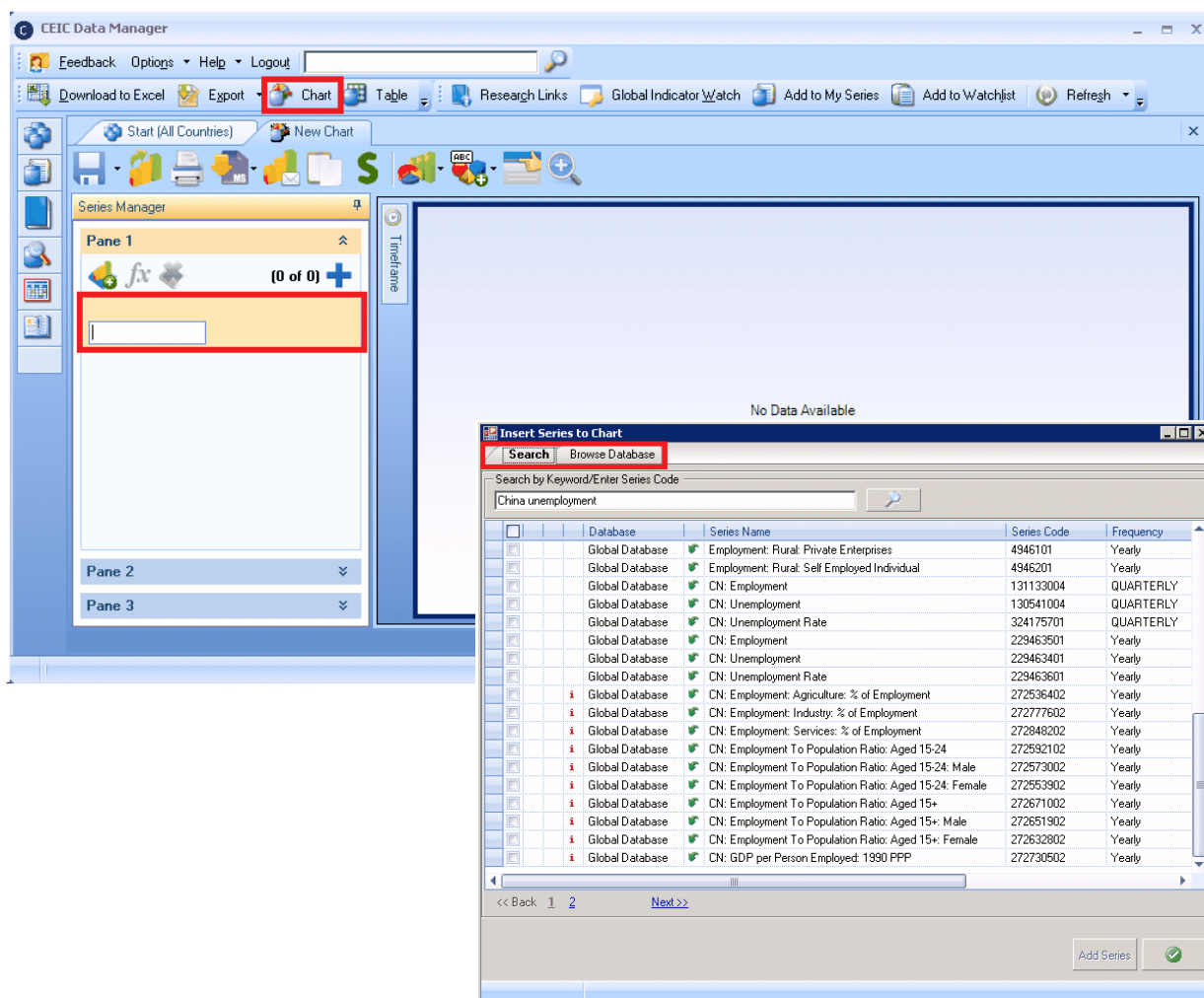


4.3 Chart

- CDM Charting can be as simple or as sophisticated as you require. You can use Quick Charts to see trends and perform simple customizations, or if you require something more, you can go to the Chart Manager to choose from a large range of customizations for your presentations and quickly share them with your colleagues. CDM Charts can be created from the following options.

I. Chart Button

- Click on the Chart Button from the CDM Toolbar to open the Charting interface named "New Chart". There are up to 3 panes available. Under Series Manager, choose a pane and select a blank box to start inserting series.
- Enter a series code (alphabetical or numeric) directly and press enter to plot, alternatively, click the Insert Series Button above to open the "Insert Series to Chart" window, where you can find series using keyword/series code search or browse from the layout tree and plot one or more series to your chart.



2. Create charts for selected series

- Select the series you wish to chart from CDM's Start Tab, My Series or Search results.
- Click on the Chart Button on the CDM Toolbar to plot your series.
- Note that you are can plot a maximum of 20 series in a chart at a time.

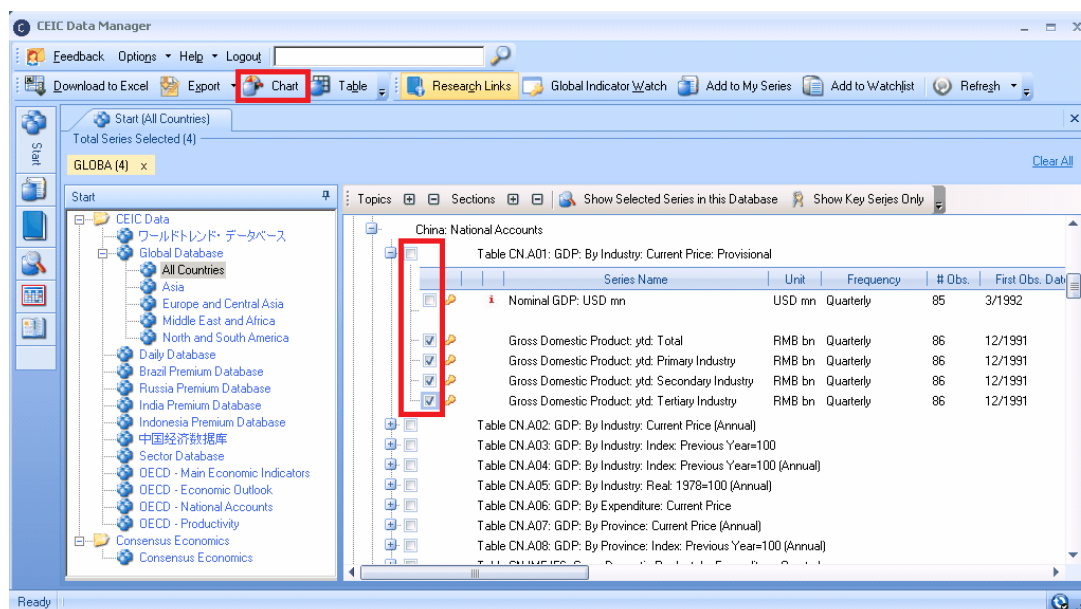
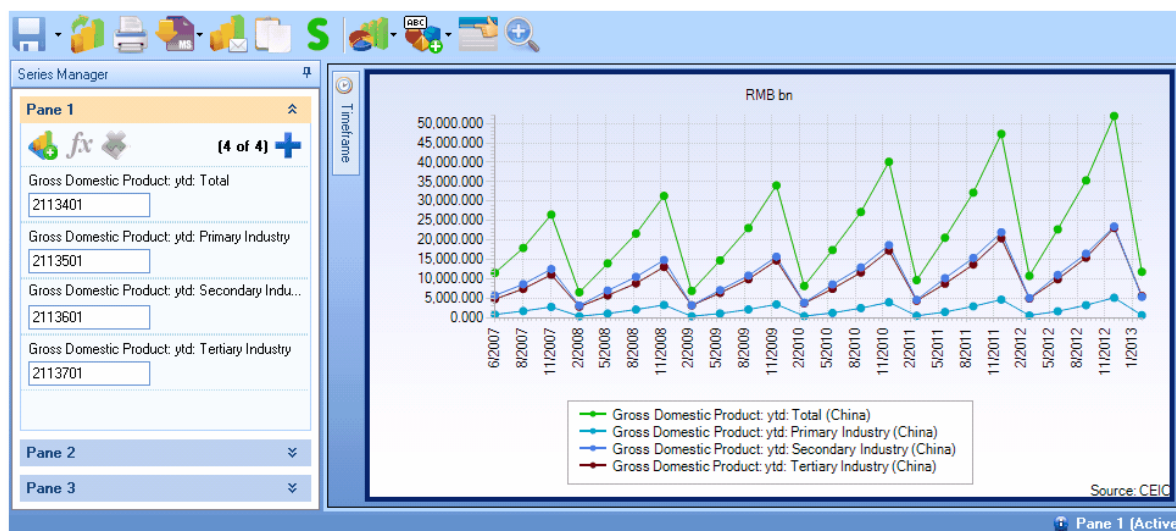


Chart Manager

- The Chart Manager will be displayed with your series plotted, using default settings. By default, the chart will be plotted using 24 observations, you can change the settings using Timeframe menu on the left side of the graph.
- For further customization, the you can make use of the tools available in the Pane Toolbar to manipulate the graph and save or share your chart using the Chart Toolbar.
- Remember to save your charts, located on the Chart Toolbar and rename your chart, which will be saved in My Library.



4.4 Table

If you want to quickly review or compare a few series without having to download the data to Excel, then you can make use of the Table feature. This is available in the CDM Toolbar via the button "Table".

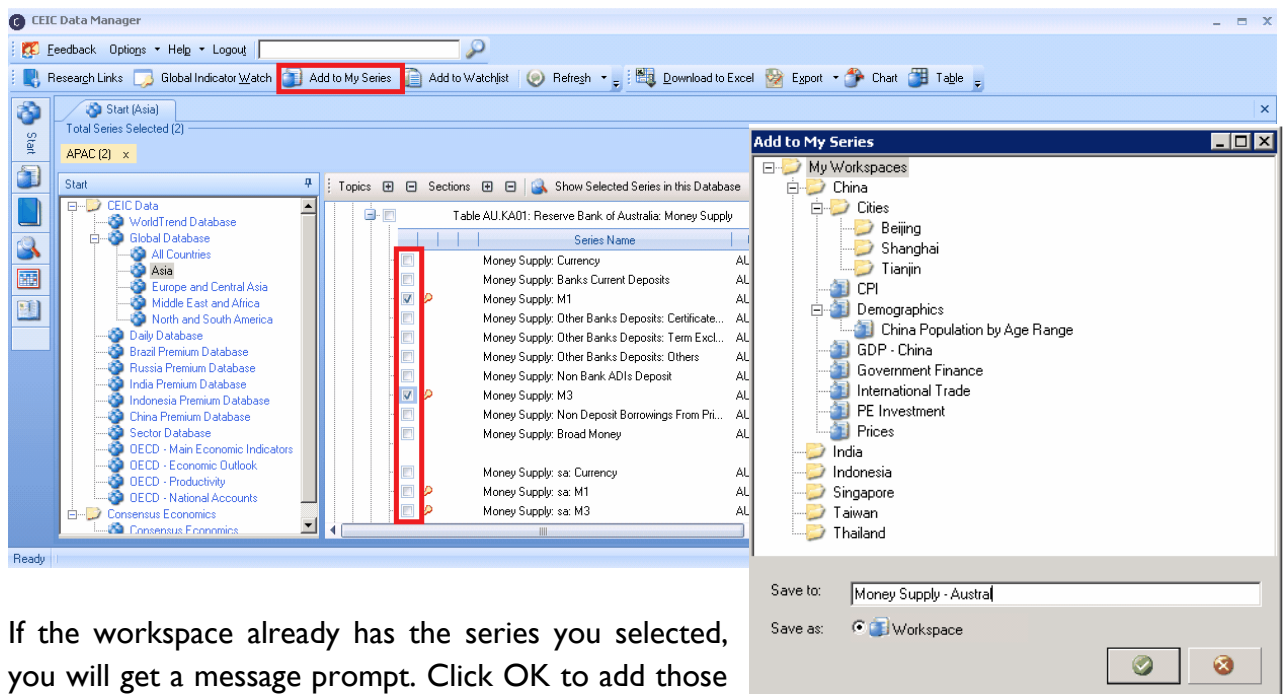


- Select the series you wish to tabulate from CDM's Start Tab, My Series or Search results.
- Then click on the Table button in the CDM Toolbar and specify your Table Settings.
- In addition to viewing the raw data, you also have the ability to **Insert Function** and view the transformed series in Table format. For example, you can calculate the YoY change of a base series and review the results, side-by-side. Note that tables cannot be saved and they will be removed when you exit CDM.

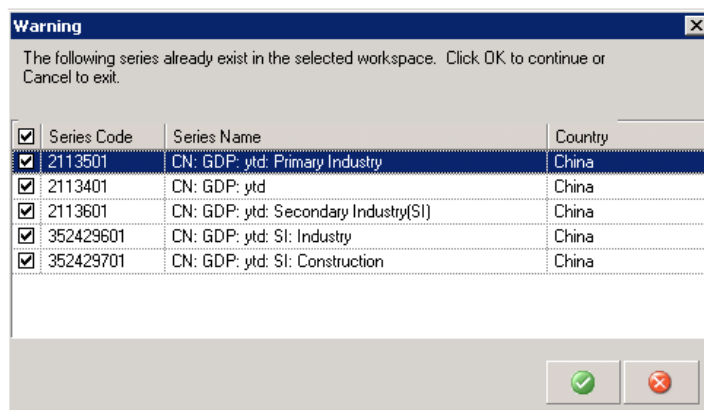
	CA: Industrial Production Index	CA: Industrial Production Index (f1)
Country	IMF	IMF
Frequency	Monthly	Monthly
Unit	2005=100	%
Source	International Mo...	International Mo...
Status	Active	Active
Series Code	219274301	219274301
Function Informa...		Changes(Perc, 0...
First Obs. Date	1/1995	1/1996
Last Obs. Date	3/2013	3/2013
Last Update time	6/25/2013	6/25/2013
3/2013	97.658	2.491
2/2013	98.925	2.206
1/2013	94.948	-0.574

4.5 Add to My Series

- Create your own workspaces and a watchlist with the combination of series you desire and add more series to an existing workspace when required.
- Select the series you wish to add from CDM's Start Tab or Search results.
- Note that you are only allowed to add up to 1000 series a workspace.
- Click on the Add to My Series button on the Toolbar, or right-click on the right pane to open the pop-up menu then select Add to My Series.
- The "Add to My Series" popup window will open. Select the workspace you want to add to by clicking on the corresponding row or if you want to create a new Workspace enter a name in the row. "Save to" and a new workspace will be created. Click the OK (green tick) to proceed or No (red-cross) to cancel this action.



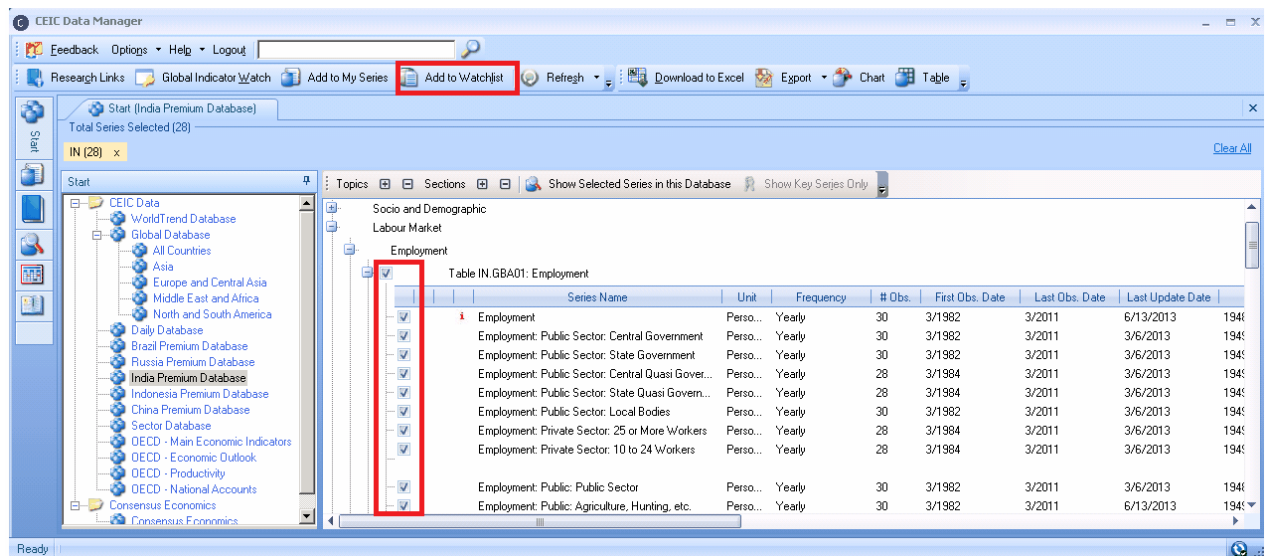
- If the workspace already has the series you selected, you will get a message prompt. Click OK to add those series into the same workspace or click Cancel to Exit



- Your workspace is now saved in My Series.
- Apart from Download to Excel and Create Chart, you can also perform other actions on your saved workspaces, such as apply functions to transform the series, which is further explained in the Functions Section.

4.6 Add to Watchlist

- CDM's My Watchlist allows you to monitor up to 1,000 series for updates and alerts you when updates occur.
- Select the series you wish to chart from CDM's Start Tab, My Series or Search results and click "Add to Watchlist".
- You can view your watchlist by clicking on "My Watchlist" in My Series.



- Series that have been updated since you logged in will be shown in red in the right pane.
- You can rearrange the series order in your watchlist by using the Move Up and Move Down arrows and group series by column header.

	Series Name	Unit	Frequency	First Obs. Date	Last Obs. Date	Last Update Time	# Ob
1	NN: Summary of Intl Position: BIS: Total Assets	USD bn	Quarterly	12/1977	3/2013	7/24/2013	142
2	NN: Summary of Intl Position: BIS: Total Assets: ...	USD bn	Quarterly	12/1977	3/2013	7/24/2013	142
3	NN: Summary of Intl Position: BIS: Total Assets: ...	USD bn	Quarterly	12/1977	3/2013	7/24/2013	142
4	NN: Summary of Intl Position: BIS: External Assets	USD bn	Quarterly	12/1977	3/2013	7/24/2013	142
5	NN: Summary of Intl Position: BIS: External Asset...	USD bn	Quarterly	12/1977	3/2013	7/24/2013	142
6	NN: Summary of Intl Position: BIS: External Asset...	USD bn	Quarterly	12/1977	3/2013	7/24/2013	142
7	NN: Summary of Intl Position: BIS: External Asset...	USD bn	Quarterly	12/1995	3/2013	7/24/2013	70

- When the series in your watchlist are updated, a pop-up alert will advise you. Update Time is Hong Kong time (GMT/UTC +8 hours).

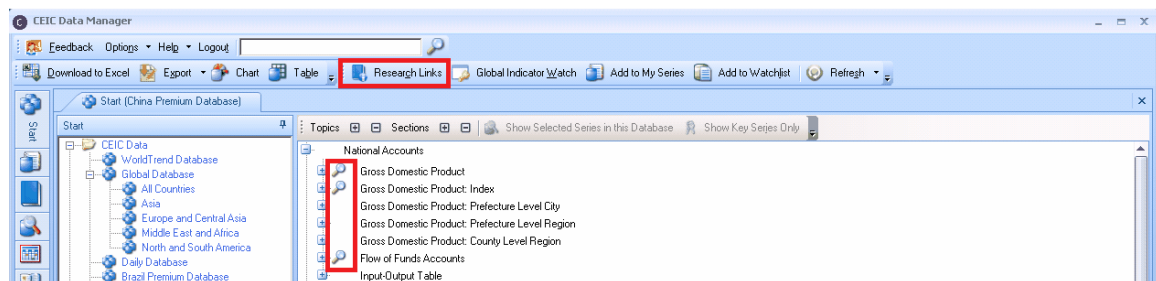
Series Name	Country	Code	Update Time
NN: Summary of Intl P...	International	33240501	2013-07-24 02:12:04
NN: Summary of Intl P...	International	33240601	2013-07-24 02:12:04
NN: Summary of Intl P...	International	33240701	2013-07-24 02:12:04
NN: Summary of Intl P...	International	33240801	2013-07-24 02:12:04
NN: Summary of Intl P...	International	33240901	2013-07-24 02:12:04
NN: Summary of Intl P...	International	33241001	2013-07-24 02:12:04
NN: Summary of Intl P...	International	33241101	2013-07-24 02:12:04
NN: Summary of Intl P...	International	33241201	2013-07-24 02:12:04
NN: Summary of Intl P...	International	33241301	2013-07-24 02:12:04

4.7 Research Links

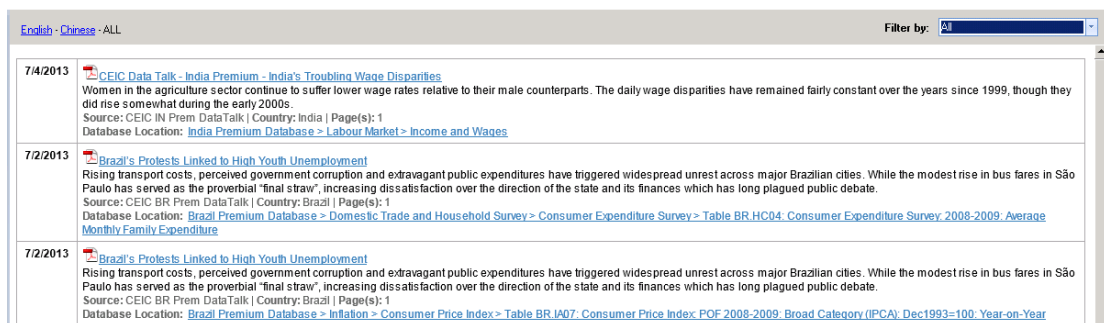
- Research Links is a feature exclusive to the Premium Databases, namely for China, India, Indonesia, Russia and Brazil. It gives you access to proprietary research commentaries produced by a team of regional experts specialized in these economies.

Research Links can be accessed in 2 ways:

- Click on the Research Links icon (magnifying glass) in the CDM layout tree to view documents of the Section related to the database you are viewing.
- Alternatively, click on the Research Links button from the CDM Toolbar to view documents from all Premium Databases.



- The Research Pane shows a list of documents that you can click on to view in a new CDM window. The list is filterable by database and also by language (English or Chinese or All).

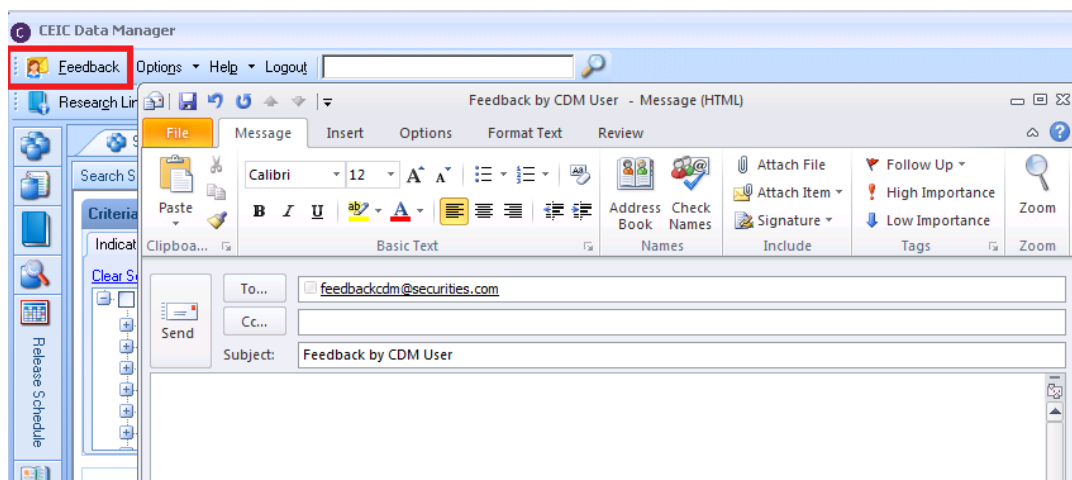


- Research documents are in pdf format and can be Saved or Printed directly from CDM.



4.8 Feedback

- You can send us feedback and questions through the “Feedback” button available on the main CDM toolbar.



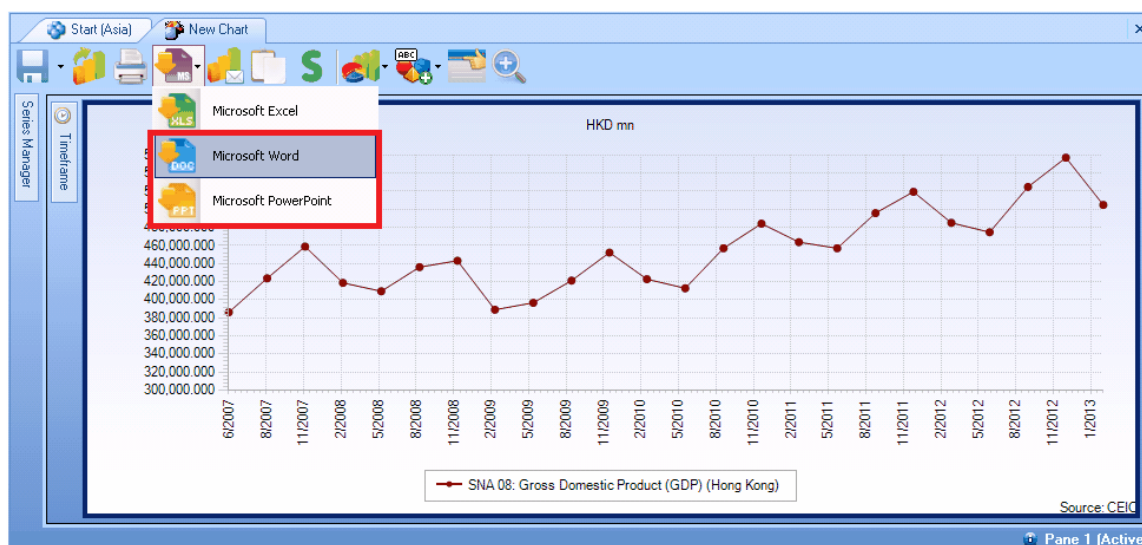
- Feedback will be sent via your default e-mail application, e.g. Outlook. Your message will be sent to our customer service whose local representative will contact you regarding your query.

5 CDM Link for MS PowerPoint and Word

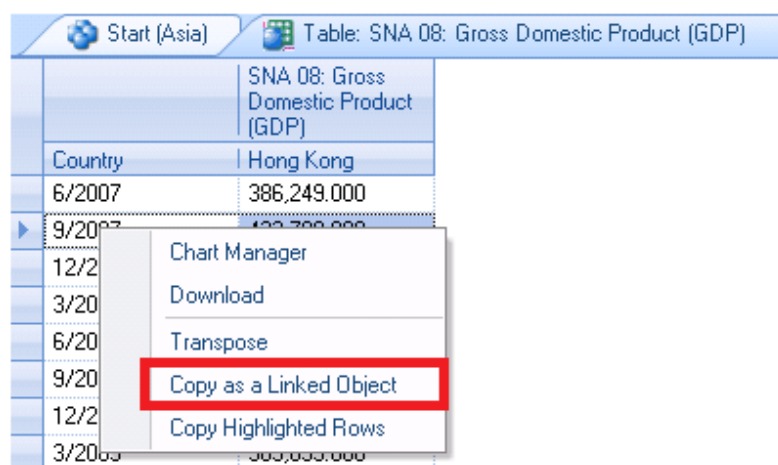
CDM allows you to copy and paste charts and tables into Microsoft PowerPoint and Word and then update them directly from the programs using CDM add-ins.

Copying CDM Charts and Tables

- In Chart click on the "Download to MS Office" Button in the Chart Toolbar to show the options available.

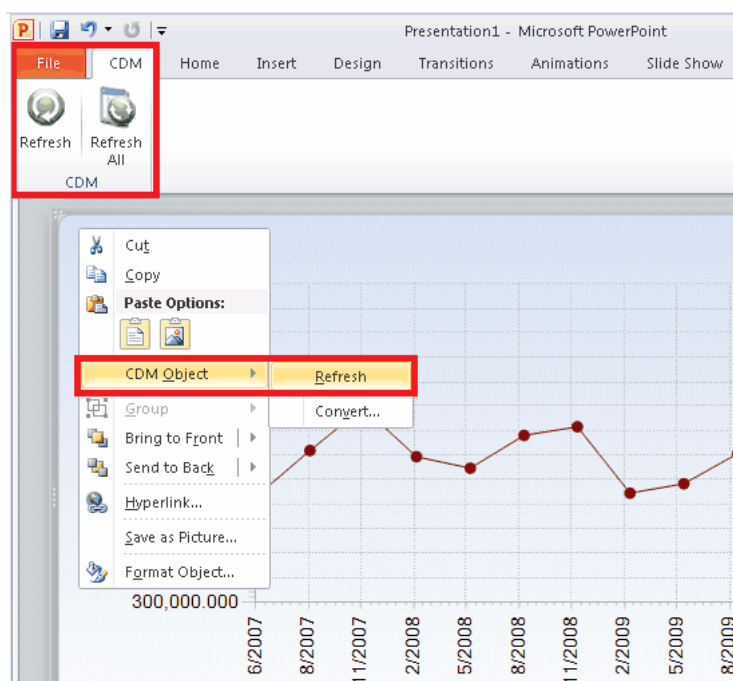


- For Tables right-click and select **Copy as a Linked Object**.



Using the PowerPoint and Word CDM Add-Ins

- Once you have downloaded your CDM graph(s) or pasted your table(s) into PowerPoint or Word, you can format and save them using standard Microsoft functionality.
- Time-points in the graph(s) or table(s) can be refreshed using the CDM add-ins **Refresh** and **Refresh All** commands. **Refresh** is located in the CDM toolbar, or can be found by right-clicking on the graph or table (as illustrated below). **Refresh All** is located only in the CDM toolbar.
- Note that the period plotted in your Table or Graph will be determined by the Timeframe settings in CDM.

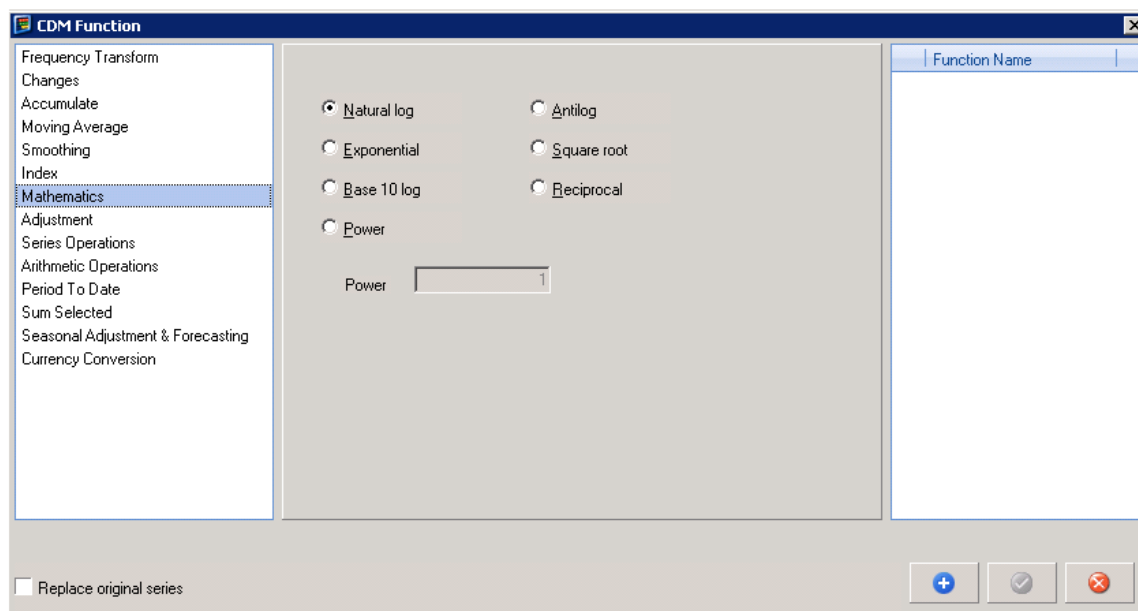


Note: You must be logged in to CDM to refresh data using the add-ins.

6 Functions

CDM provides a number of math functions that can be applied to series in the CEIC databases. You can then use the transformed series to create charts or download to Excel for further analysis.

- Select your series then click on the Insert Function button which can be found on the My Series, Chart, Table Tabs and also Edit Download in Excel.
- Choose a function from the list on the left, refine with parameters in the middle and click on the plus (blue cross) to see your function added on the right pane. You can select more than one function. Delete functions by highlighting and click on the deleted (red cross).
- Tick the "Replace original series" to download just your transformed series at the bottom. If you leave this unchecked, both the original and transformed series will be downloaded.



- When done, click the OK button (green tick) to transform the series. The transformed series will be added after the original series in the series list with (f*) where * denotes the function number in that workspace.

	<input checked="" type="checkbox"/>		Series Name	Unit	Function Description
1	<input type="checkbox"/>	<input checked="" type="checkbox"/>	CN: Population: Age 0 to 14	Person mn	
2	<input checked="" type="checkbox"/>	<input checked="" type="checkbox"/>	CN: Population: Age 0 to 14 (f1)	Person mn	Sum (CN: Population: Age 15 to 59)
3	<input type="checkbox"/>	<input checked="" type="checkbox"/>	CN: Population: Age 15 to 59	Person mn	
4	<input type="checkbox"/>	<input checked="" type="checkbox"/>	CN: Population: Age 15 to 64	Person mn	
5	<input type="checkbox"/>	<input checked="" type="checkbox"/>	CN: Population: Age 60 and Above	Person mn	
6	<input type="checkbox"/>	<input checked="" type="checkbox"/>	CN: Population: Age 65 and Above	Person mn	

7 Settings for Language

- **Interface**

This option defines the language of the interface, i.e., the labels, buttons, messages, and so on. It has no impact on the display language of the databases and series. The default setting is "English - United States". If you make changes to this option, you need to restart CDM after saving the changes for it to take effect.

The following languages are available for the CDM interface:

English (default); Chinese (Simplified); Japanese; Polish; and Russian

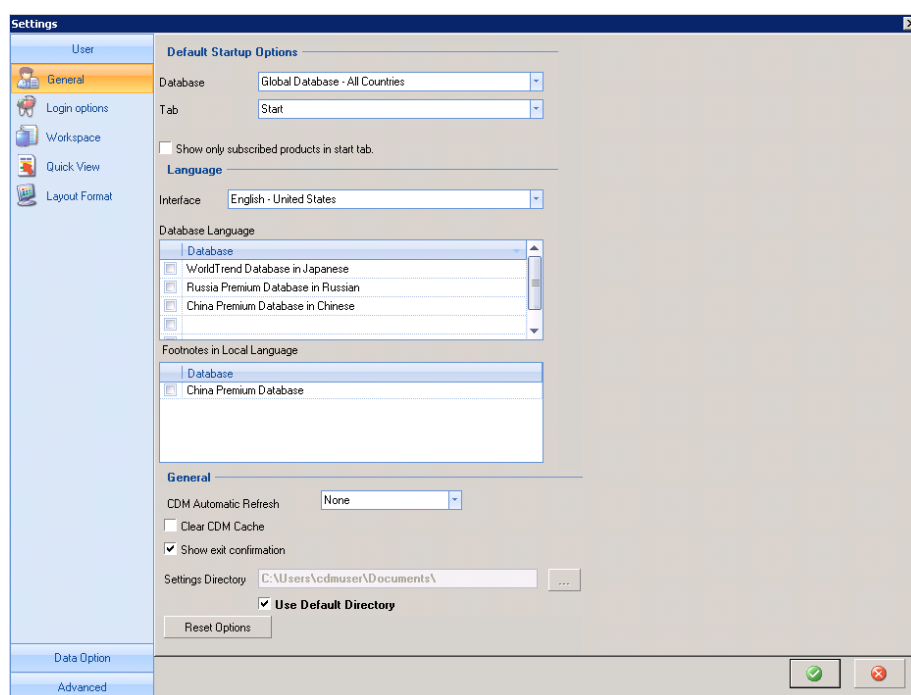
- **Database Language**

Some databases have non-English versions which are usually defined in the native language of the region(s) it covers. For example, China Premium Database has a version in Simplified Chinese and Russia Premium Database in Russian. Besides, WorldTrend Database has a version in Japanese.

If you checked this option, the data of the corresponding databases will be shown in the database language specified in the menu, regardless of what the "interface language" is. For example, you can have interface in English and China Premium Database in Simplified Chinese.

- **Footnotes in Local Language**

Some databases have non-English versions of footnotes. If you checked this option, the footnotes of that database will be displayed in native language.

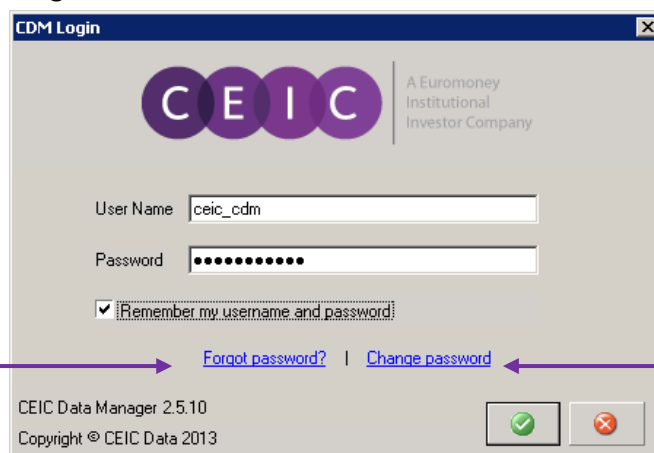


8 Enhancements on the Latest Version of CDM

The features in this section apply to users who are on the latest version, CDM2.5.10 and onwards. This version includes enhancements to security, support and charts, refining features on CDM2.5.

8.1 Password Management

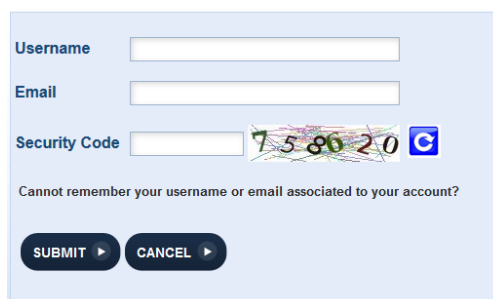
- In CDM 2.5.10, we have proactively taken steps to tighten security measures for our users by adding password management features.



a) Forgot Password?

If you have forgotten your password, you can reset it by clicking on this link. You will be directed to the Password Reset page shown below. You are required to enter your username and an email address associated to that username stored in our system. After verification, an email will then be generated with a link to reset your password.

Password Reset



Note: if you cannot provide an email address associated with your username, the system will advise you to contact our Customer Service

b) Change Password

Click on this link, where you will be directed to the Change Password page to enter your old and new credentials.

Change Password

If you don't remember your current password, please try [password reset](#).

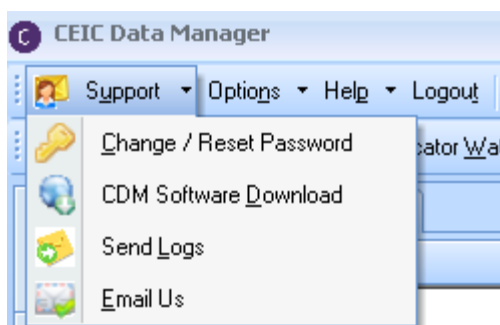


Note: It is strongly advised that you change your password every 180 days to increase security of your account. Users will receive an alert 7 days before password expiry, thereafter, users are required to change their password first before login.

Note: It is advised that Passwords be a mix of letters and numbers of at least 6 characters long.

8.2 Support

For convenience, in CDM2.5.10 all the support buttons have been consolidated under the new Support menu in the CDM Toolbar. This replaces the Feedback button, which has been renamed Email Us.



a) Change/ Reset Password

Users will be redirected to the FAQs of the Support section at www.ceicdata.com/support where you can find links to change/reset password.

b) CDM Software Download

Users will be redirected to the FAQs of Support section at <http://www.ceicdata.com/support> where you can find the Downloads tab to download CDM software.

c) Send Logs

This option is relocated from the Help menu

d) Email Us

This replaces the previous **Feedback** button.

Shortcut keys are available for the above menu and buttons.

Support – Alt + U

Change / Reset Password – Alt +U, C

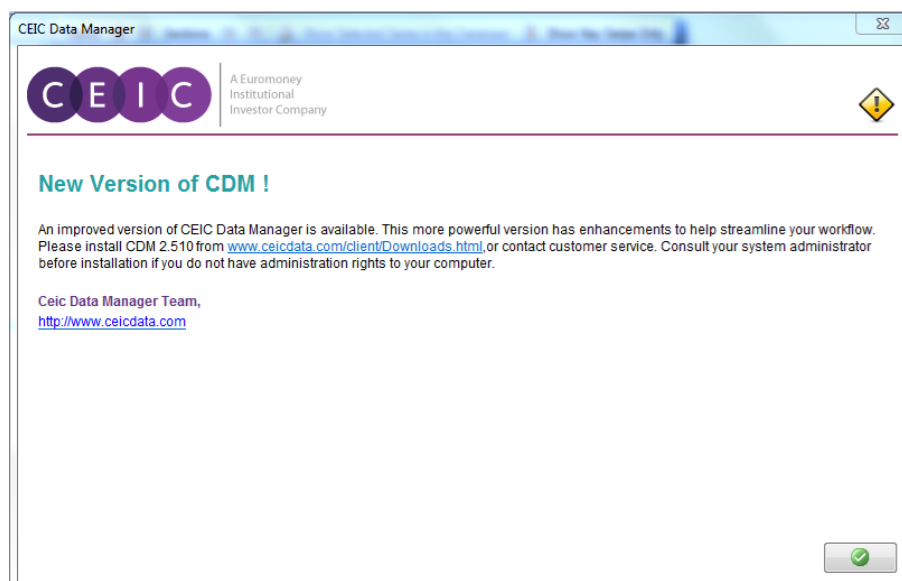
CDM Software Download – Alt +U, D

Send Logs – Alt +U, L

Email Us – Alt +U, E

8.3 New Notifications Window

In CDM2.5.10, users will see a new notifications window after login, alerting you of important messages, such as new CDM version releases, password expiry, etc.



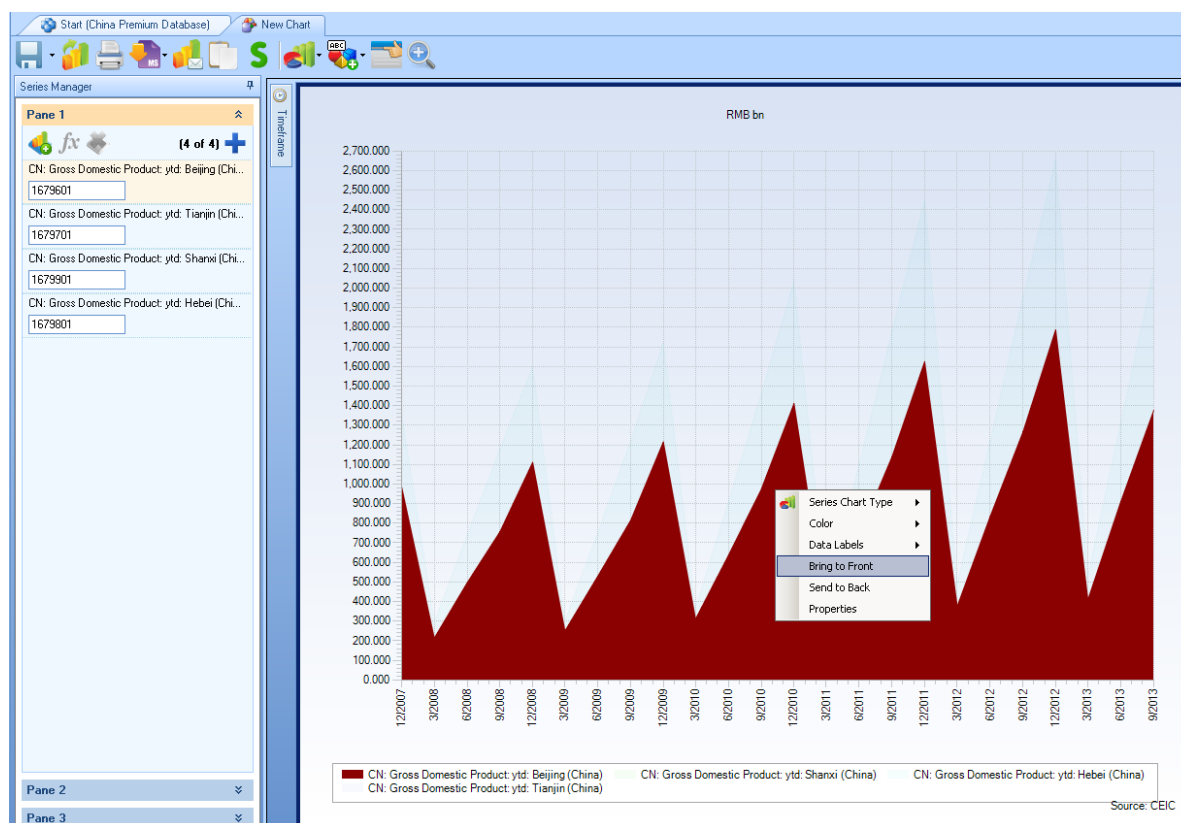
8.4 CDM Charting Enhancements

Refinements to charting have been made to enhance customization features and ease of use, which are detailed below:

- **Bring to Front / Send to Back**

Particularly useful for chart types such as Area, when one series may overlap another, you can use the Bring to Front/Send to Back feature.

After adding multiple series to the charting interface, highlight the series and right click the context menu, choose to bring the series to the front or to the back.



- **Add Series to Chart**

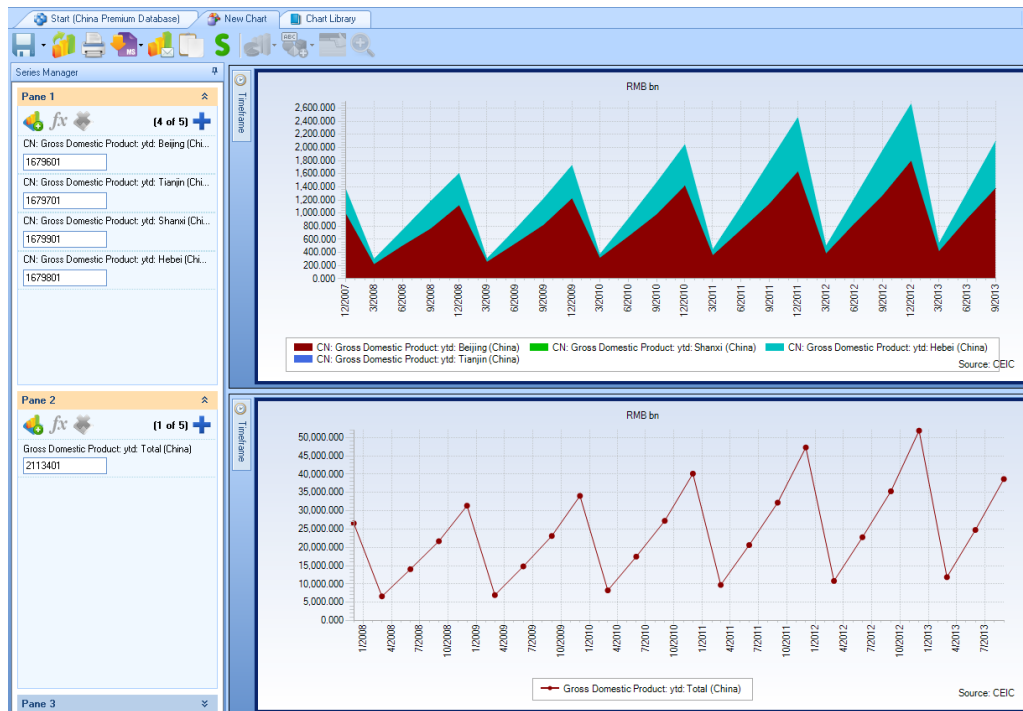
When users click on the **Add Series** button, series will be inserted in a new row and placed on the top. It will not replace the existing series in the chart pane.



Add Series Button opens the “Add Series to Chart” window, where you can find series using keyword/series code search or browse from the tree layout and add one or more series to your chart.

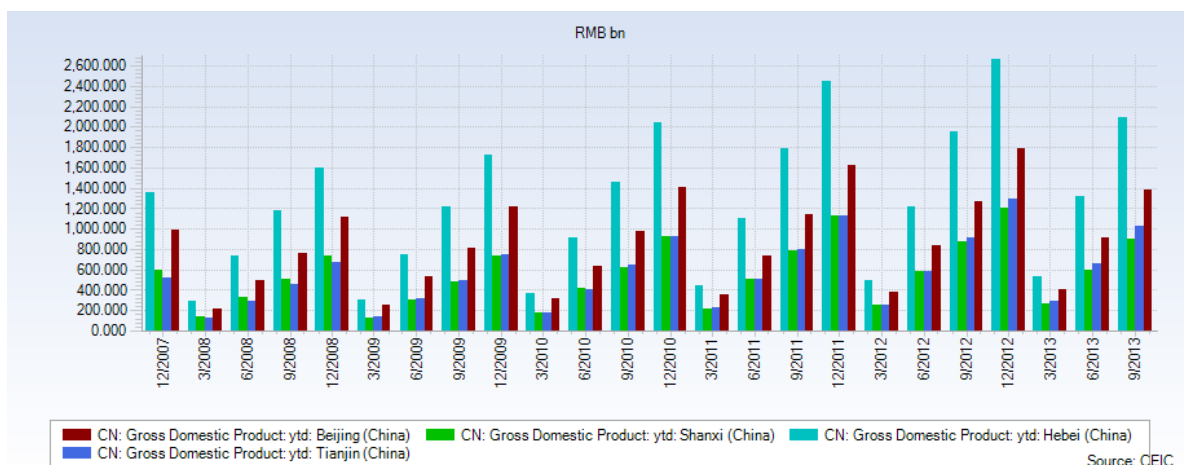
- Pane Toolbar**

When multiple chart panes are selected, the pane toolbar will be grayed out automatically because the pane toolbar only applies to a single selected pane at one time.



- X-axis Label for Quarterly Series**

The default X-axis label for quarterly series has been modified from Jan, Apr, Jul, Dec to Mar, Jun, Sep, Dec which is more intuitive.



9 User Guide

The help document is accessible from the “User Guide” Button under Help Menu on the CDM Toolbar. A PDF User Guide is downloadable from:

<http://www.ceicdata.com/client/downloads>

10 About CEIC and Our Databases

For more information about CEIC, visit our website:

<http://www.ceicdata.com>

For more information about our databases, visit our website:

<http://www.ceicdata.com/en/products>

SUPPORT AND LOCATIONS

Our customer support staff are based in 30 offices around the globe, and provide the training and support you need to make the most of the Brazil Premium Database. Leveraging on our extensive network of data experts, we resolve most inquiries within 24 hours. Regular e-mail alerts keep you informed of new series added to the database.

US HEADQUARTERS

CEIC Data
225 Park Avenue South
New York, New York 10003
+1 212 610 2928
usinfo@ceicdata.com

EUROPEAN HEADQUARTERS

CEIC Data
Nestor House Playhouse Yard
London EC4V 5EX
+44 207 779 8027
euinfo@ceicdata.com

ASIA HEADQUARTERS

CEIC Data
18/F, 248 Queen's Road East
Wanchai, Hong Kong
+852 2581 1981
nainfo@ceicdata.com

LATIN AMERICAN HEADQUARTERS

CEIC Data
Rua Tabapua, 422-CJ, 43/44
CEP: 04533-001 Sao Paulo, Brazil
+55 11 3074 2654
lataminfo@ceicdata.com